

## TH 221 PLATE HEAT EXCHANGER



### GENERAL DESCRIPTION

The apparatus is used for studying heat transfer through a plate heat exchanger under parallel or counter flow conditions.

The unit consists of a plate heat exchanger, and a service module. The module comprises a hot water tank with a transfer pump, instruments for monitoring and control. Parallel or counter flow is by switching cold water hoses. The units requires outside water supply.

### TYPICAL EXPERIMENTS

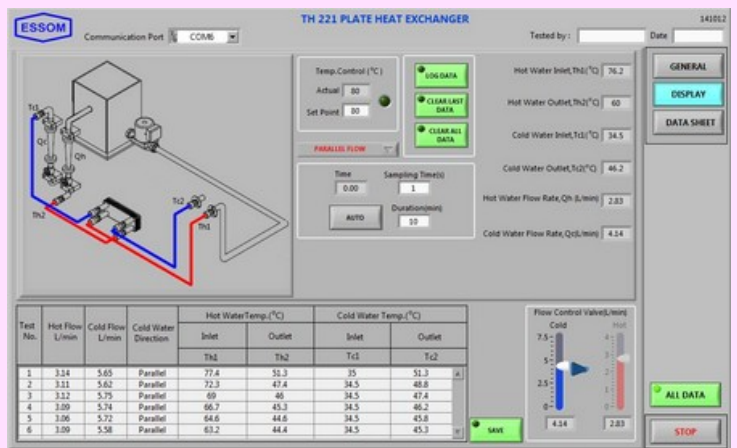
- Demonstration of heat transfer under parallel and counter flow.
- Determination of heat transfer coefficient.
- Effects of flow rate and temperature difference.

### TECHNICAL DATA

- Construction : Stainless steel plate heat exchanger.
- Service module consisting of :
  - Hot water tank and pump.
  - Heater : 3000 W.
  - Temperatures : 4 ea.
  - Flow meters : Hot water and cold water.
- Power supply : 220V 1Ph 50 Hz. Other power supply is available on request.

### OPTIONAL EQUIPMENT

- TH 221-050 Computer Interface  
This includes sensors, computer interface unit, and software for data display and analysis by computer (separately supplied)
- TH 221-060 Computer Control  
This includes control motors, sensors, computer interface unit, and software for data display analysis and control by computer (separately supplied).



Net (unpacked) shipping dimensions WxLxH  
Net weight

: 50 x 84 x 65 cm  
: Approx. 32.5 kg