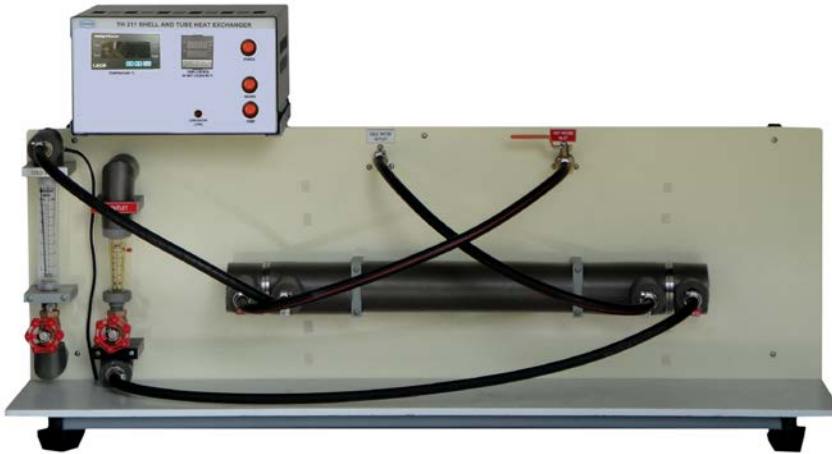


## TH 211 SHELL AND TUBE HEAT EXCHANGER



### GENERAL DESCRIPTION

The apparatus is used for studying heat transfer through a shell and tube heat exchanger under parallel or counter flow conditions.

The unit consists of a shell and tube heat exchanger and a service module. The module comprises a hot water tank with a transfer pump, instruments for monitoring and control. Parallel and counter flow is by switching cold water hoses. The unit requires outside water supply.

### TYPICAL EXPERIMENTS

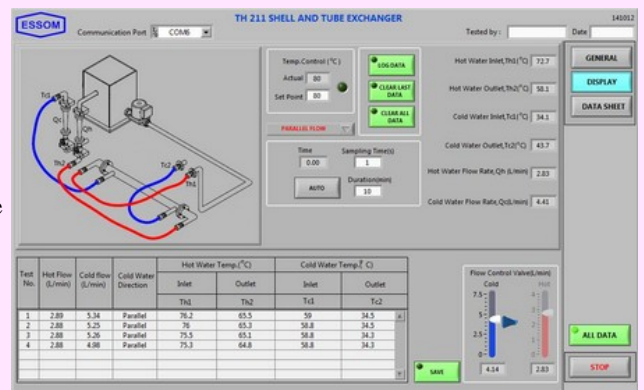
- Demonstration of heat transfer under parallel and counter flow.
- Determination of heat transfer coefficient.
- Effects of flow rate and temperature difference.

### TECHNICAL DATA

- Construction : Insulated stainless steel shell with stainless steel inner tubes.
- Service module consisting of:
  - Hot water tank and pump.
  - Heater : 3000 W.
  - Temperatures : 4 ea.
  - Flow meters : Hot water and cold water.
  - Temperature control unit : 1 ea.
- Power supply : 220V 1Ph 50 Hz. Other power supply is available on request.

### OPTIONAL EQUIPMENT

- TH 211-050 Computer Interface  
This includes sensors, computer interface unit, and software for data display and analysis by computer (separately supplied).
- TH 211-060 Computer Control  
This includes control motors, sensors, computer interface unit, and software for data display analysis and control by computer (separately supplied).



**Net (unpacked) shipping dimensions WxLxH** : 50 x 140 x 65 cm  
**Net weight** : Approx. 60 kg