

MP 121 AXIAL FLOW FAN DEMONSTRATION UNIT, Computer Interface

GENERAL DESCRIPTION

This is a bench top unit for a study of axial flow fan characteristics with data analysis by computer.

The unit consists of a small axial flow fan with DC motor on a steel base, a speed control switch, inlet and outlet ducts, an interface box, sensors, and software. The box includes power supply for the fan and computer interface unit. It also provides interface ports to sensors and computer.

The unit is to be use with a computer (separately supplied).



TEST CAPABILITIES

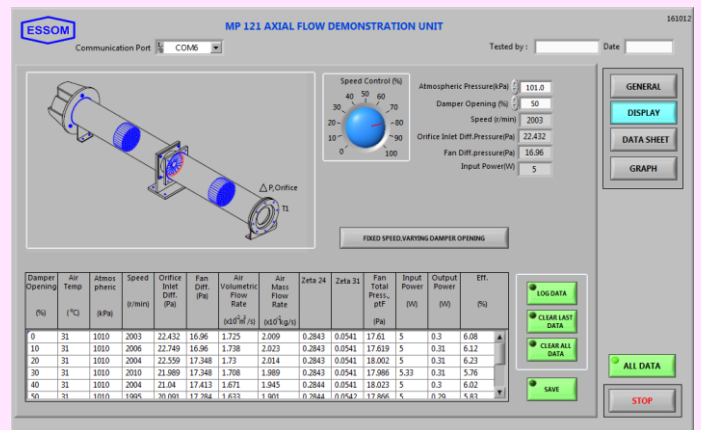
- Flow rate VS pressure
- Fan input, output and overall efficiency.
- Effect of speed on fan performance.

TECHNICAL DATA

- Fan
 - Rated maximum flow rate : 2.5 m³/min.
 - Rated maximum pressure : 0.10 kPa.
- Inlet duct : Transparent, with flow straighteners and inlet orifice.
- Outlet duct : Transparent, with flow straighteners and damper.
- Sensors with digital display:
 - Differential pressure across the fan.
 - Differential pressure at the orifice.
 - Speed of the fan.
 - Temperature of inlet air.
 - Input power.
- Accessory : Barometer.
- Software for data display and analysis by computer (separately supplied).
- Power supply : 220 V 1 Ph 50 Hz. Other power supply is available on request.

OPTIONAL EQUIPMENT

- MP 121-060 Computer Control
This includes control motor, and software, for data display, analysis, and control by computer (separately supplied).



Net (unpacked) shipping dimensions WxLxH
Net weight

: 57 x 122 x 33 cm
: Approx. 30 kg.