

## HT 203 COMPACT PELTON TURBINE TEST SET



### GENERAL DESCRIPTION

This is a self contained bench top set for studying the Pelton turbine characteristics under various flow rates and heads.

The unit consists of a storage tank, a pump, a turbine, a dynamometer, and measuring instruments. The adjustable nozzle direct a water jet to the runner buckets.

### TYPICAL TESTS

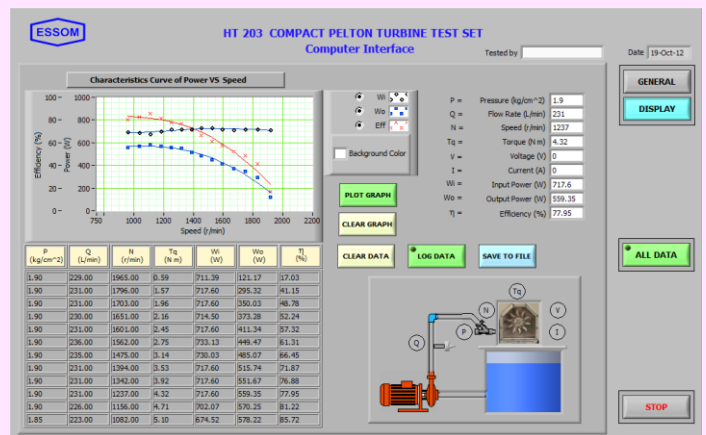
- Torque vs speed at various heads and flow rates.
- Power output vs speed for various heads and flow rates.
- Efficiency vs speed for a given head and flow rate.
- Racing characteristics.

### TECHNICAL DATA

- Turbine :
  - Construction : Stainless steel runner and nozzle.
  - Maximum power : 400 W of brake power.
- Pump : 2.2 kW
- Dynamometer : Water brake absorber.
- Measuring instruments :
  - Torque : Spring balances.
  - Flow rate and speed digital display.
  - Pressure : Pressure gauge.
- Power supply : 220V 1Ph 50 Hz. Other power supply is available on request.

### OPTIONAL EQUIPMENT

- HT 051 Compact Turbine Computer Interface.  
This includes sensors, computer interface unit, and software for data display and analysis by computer (separately supplied).



**Net (unpacked) shipping dimensions WxLxH** : 70 x 170 x 90 cm  
**Net weight** : Approx. 140 kg

